

Energy Monitors with WiFi

smart-MAIC D103-300A / 600A



for a measure of high currents up to 600A and installation on highly loaded lines up to 400KW

**Measure, Analyze,
Improve, Control
... be smart**

Smart Energy Monitors

The smart-MAIC D103 is a three-lines smart energy monitor with full monitoring of all electricity parameters - Active Energy (kWh), Current (A), Voltage (V), Power Factor (Φ).

Analysis of the collected data will show the structure and peaks of energy consumption, identify excessive consumption and allow to make the right decisions to reduce costs.

Cloud Data Server and Dashboard

Smart-MAIC Dashboard WEB application to analyze and visualize collected data. This allows monitor current state and visualize historical data received from smart-MAIC devices. The user is able to flexibly configure the widgets of indicators and graphs.

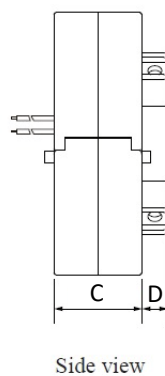
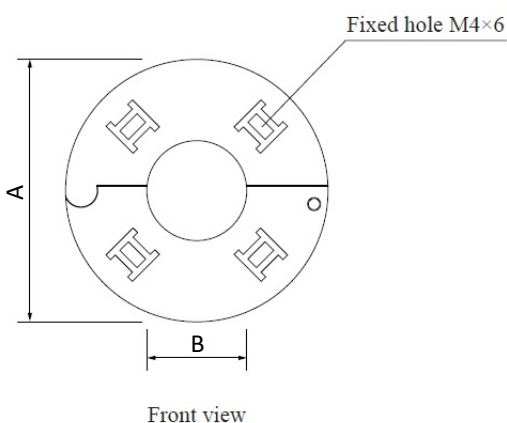


Specifications of the Energy Monitor

Measurement Error	< 1%
Current Measurement	up to 600 A
Load Power on Controlled Output	50 W
Power Consumption	less than 1.2 W
Wireless Communication Protocol	2.4 GHz / IEEE 802.11 (b, g, n)
GSM (option)	2G EGSM900, DCS1800, GSM850, PCS1900
Data Refresh Interval	5 sec
Data Collection Interval	1 minute
Storing Data Without WiFi Connection	up to 17 days
Working Range Temperatures	from -40 to +70 °C
Size	90 x 67 x 52 mm (3 DIN)
Power Supply	AC 100-240 V, 50/60 Hz, 0.1 A



Specifications of the Current Transformers



CTs	A	B	C	D	ACCURACY CLASS
300A	61	23	20.2	6	0.5 Class
600A	79	32	20.2	6	0.5 Class

